



## 34 St Nicolas Lodge 58 High Meadow Road

Kings Norton, Birmingham, B38 9FS

Prices From £304,950

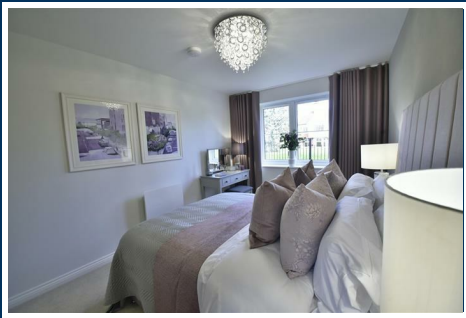


St. Nicolas Lodge is a collection of 38 one and two bedroom retirement apartments in the heart of Kings Norton close to a Co-operative convenience store, a post office, a chemists and lots of restaurants and cafes to relax in.

All Churchill developments have been carefully designed to make life easier, leaving you free to enjoy your retirement with self-contained apartments providing you with privacy and peace and quiet when you want it. We are currently featuring a moving package worth thousands - so give us a call to discover more.

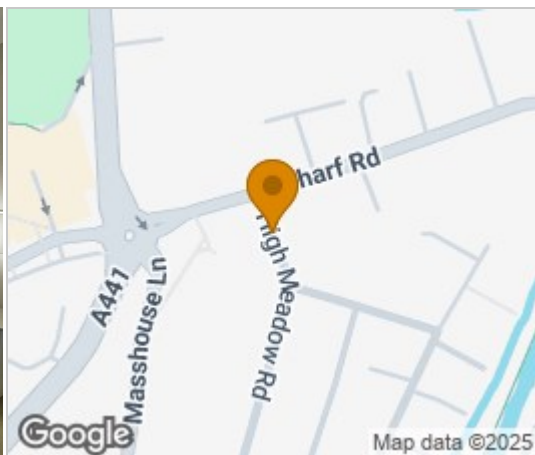
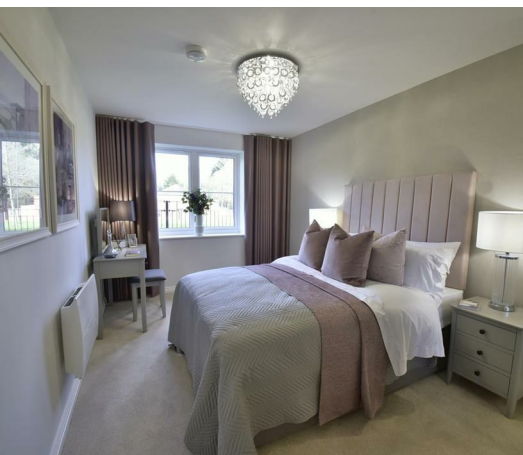
At St Nicolas Lodge there is a Lodge Manager on hand Monday to Friday to act as a friendly neighbour and oversee the lodge as well as organise regular Lodge events.

All apartments meet a very high standard of finish and quality expected by customers and benefit from a comprehensive 10-year Building Warranty Guarantee

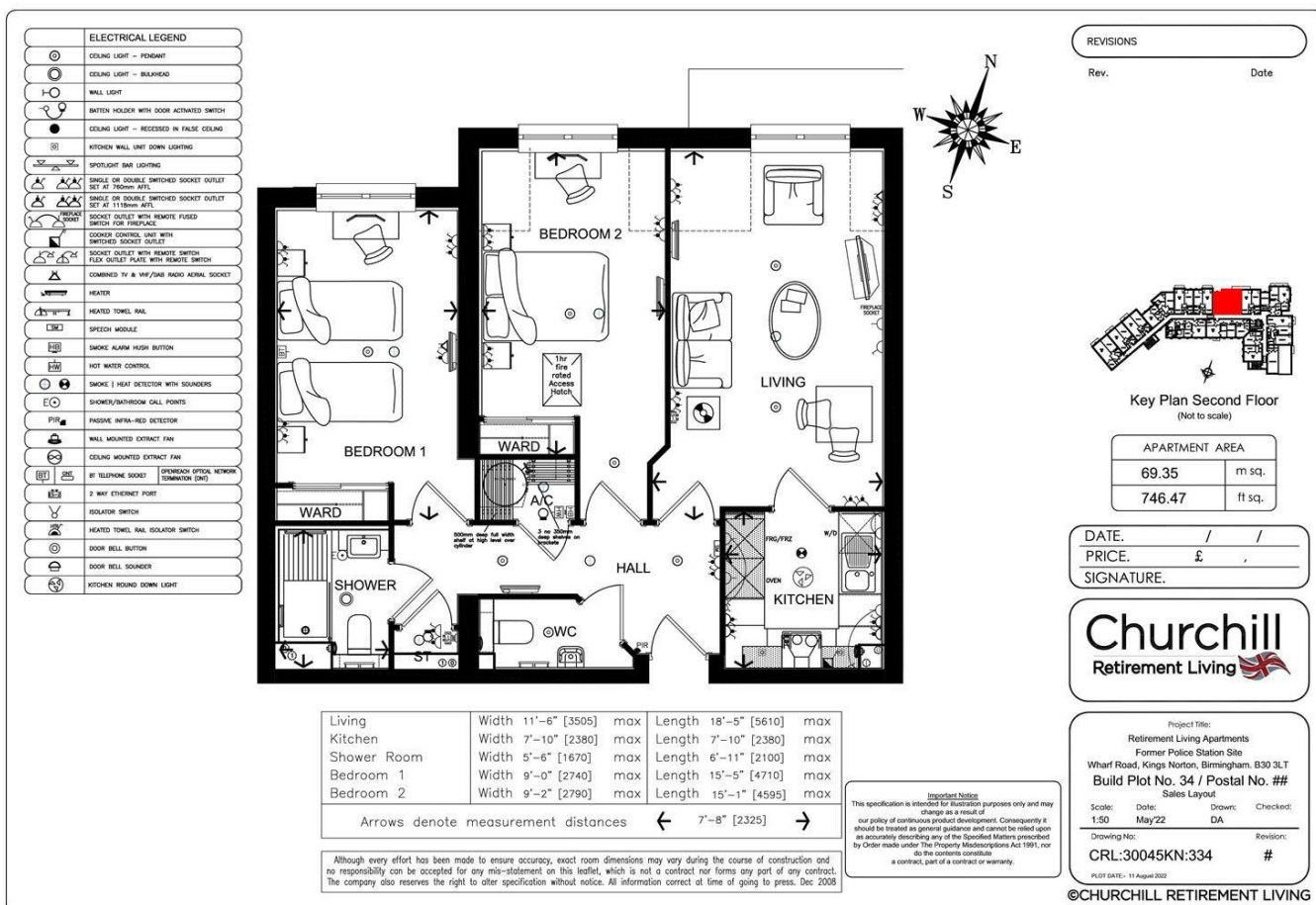








## Floor Plan



## Viewing

Please contact our Kings Norton Office on 0121 459 2299 if you wish to arrange a viewing appointment for this property or require further information.

These particulars, whilst believed to be accurate are set out as a general outline only for guidance and do not constitute any part of an offer or contract. Intending purchasers should not rely on them as statements of representation of fact but must satisfy themselves by inspection or otherwise as to their accuracy. No person in this firm's employment has the authority to make or give any representation or warranty in respect of the property.

### 1. Additional Services / Referral Fees

1.1 By law, the Agent must tell you if it or any connected person intends to earn any commission from offering you other services. If the Agent or any connected person earns money from any of these services, the Agent or connected person would keep the commission. The following services may be offered by the Agent or connected persons: lettings, financial services, surveying services and conveyancing.

## Energy Efficiency Graph

